

About your new bathroom



SAXON
WEALD



www.saxonweald.com

Introduction

We're pleased to be fitting a new bathroom in your home. This pack gives you information about what the work involves, what you need to do and the choices you will have. We look forward to working with you on the improvements.

Your start date is:

We will be in your home for approximately working days

Essential information

Your key contact: **Email:** kandb@saxonweald.com

Our hours of work are between 8am and 4pm, Monday to Friday.

We will try to keep disruption to a minimum, but a level of noise, mess and inconvenience is to be expected. We will need your support and cooperation to ensure things go as smoothly and quickly as possible.

Access to your home

Please tell us if there are any particular days or times when we will not be able to gain access to your home. If you cannot be at home for the duration of your refurbishment, you will need to arrange access for us perhaps by a neighbour or you can leave us a key.

If we can't get in or if you miss our appointments, the work to your home will be delayed or cancelled.

Risk management

Before we carry out any work to your home, we need to carry out a risk assessment.

This will find out whether there are any hazardous materials, such as asbestos, which could be disturbed during the work.

If a survey is required, our contractor will contact you to arrange an appointment.

First steps

We will arrange an appointment to visit your home and carry out a survey. **If this finds your bathroom needs to be replaced we will then draw up appropriate plans.** During this visit, we will explain the work involved and talk to you about your personal requirements.



We will offer you a range of choices in respect of the colour of your tiles, paint and flooring. Please note that once you have made your selection, the decision is final and cannot be changed.

Before work starts

Your bathroom needs to be clean and clear. Any furniture and personal items must be moved away from the bathroom area. If you are not able to manage this, please let us know.

You will need to sign a disclaimer at this point.

During the work

Your electricity, water supply and heating may be disconnected during the working day, but we will reconnect them each evening.

During the works access to your washing facilities will be limited. Your toilet should be usable for most of the duration of works but we will let you know when it will be changed and not able to be used. This should be completed within 3 hours

Children and pets must be kept away from the work area at all times.

Please do not leave children under 18 alone in your home while we are working. Our staff will not carry out the work where children are unaccompanied.



Your choices

This leaflet shows the options available to you. We have tried hard to reproduce the colours accurately, but we will also show you samples when we visit.

Concerns or questions

You should raise any concerns with the supervisor on site in the first instance.

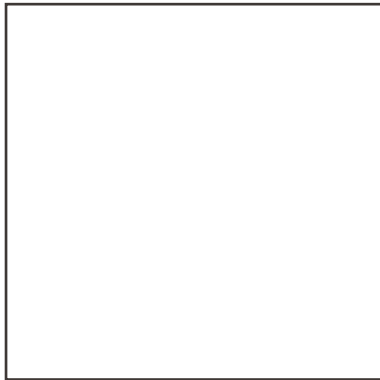
Alternatively, please email

kandb@saxonweald.com

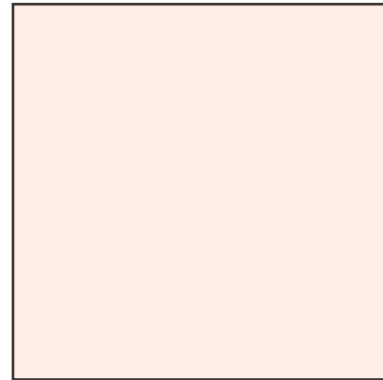
Paint

Tick one from the selection below:

1. White



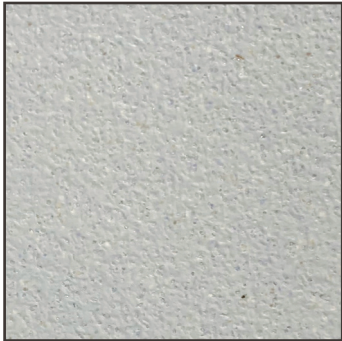
2. Magnolia



Safety flooring

AKW Safety Flooring comes in a wide range of colours and provides a high level of slip resistance in a bathroom adaptation. Tick one from the selection:

☐ 1. Cement



☐ 2. Dove



☐ 3. Slate



☐ 4. Anthracite

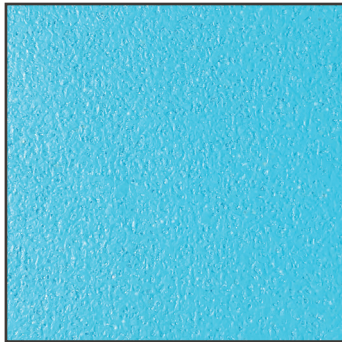




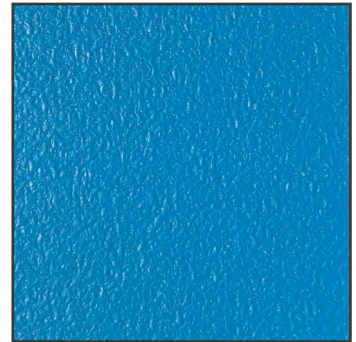
5. Rouge



6. Topaz



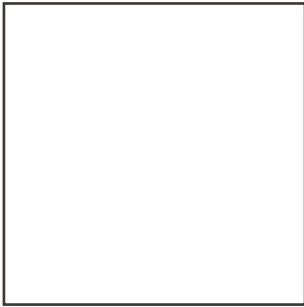
7. Cerulean



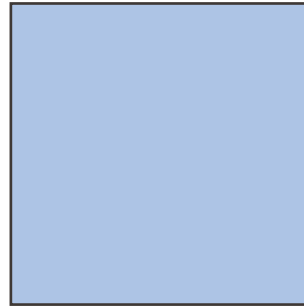
Tiles

Tick one from the selection below:

1. White



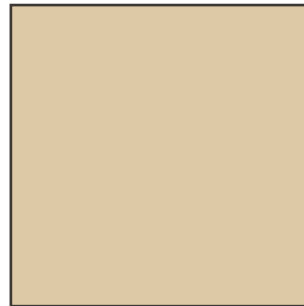
2. Blue



3. Grey



4. Beige



Disclaimer

Remember, please note that once you have made your selection, the decision is final and cannot be changed.

Notes / questions for inspection stage



Saxon Weald is a charitable community benefit society
(reg no. 7971) and is regulated by the regulator for social housing.

Information correct at July 2019

Saxon Weald

Head office: Saxon Weald House,

38-42 Worthing Road, Horsham, West Sussex RH12 1DT

Tel: 01403 226000 | **Email:** hello@saxonweald.com | www.saxonweald.com

